

STEPPENWOLF



RENTALS AT STEPPENWOLF

Theaters.....	2 - 5
Lobbies and Bars.....	6 - 9
Meeting and Rehearsal Spaces.....	10 - 14
Rental Details.....	15 - 17
Mission and Contact.....	18

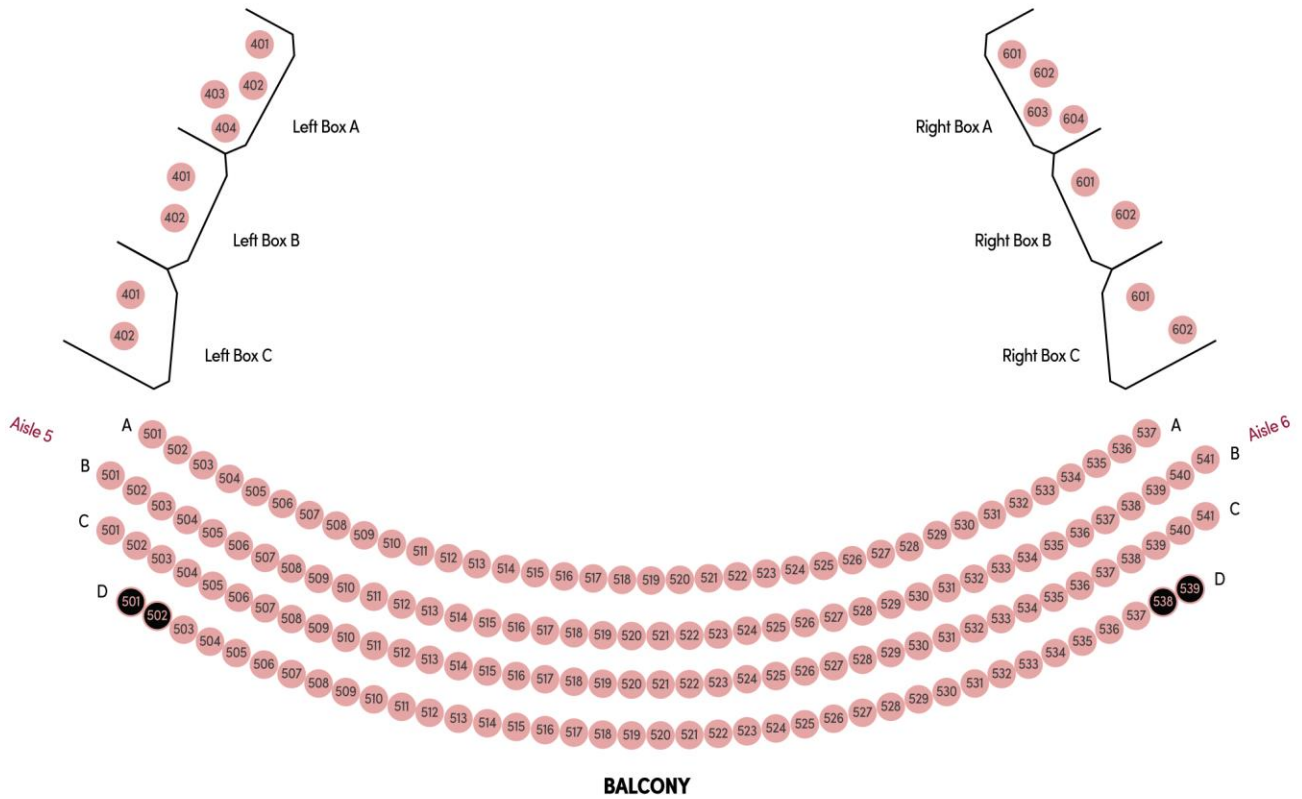
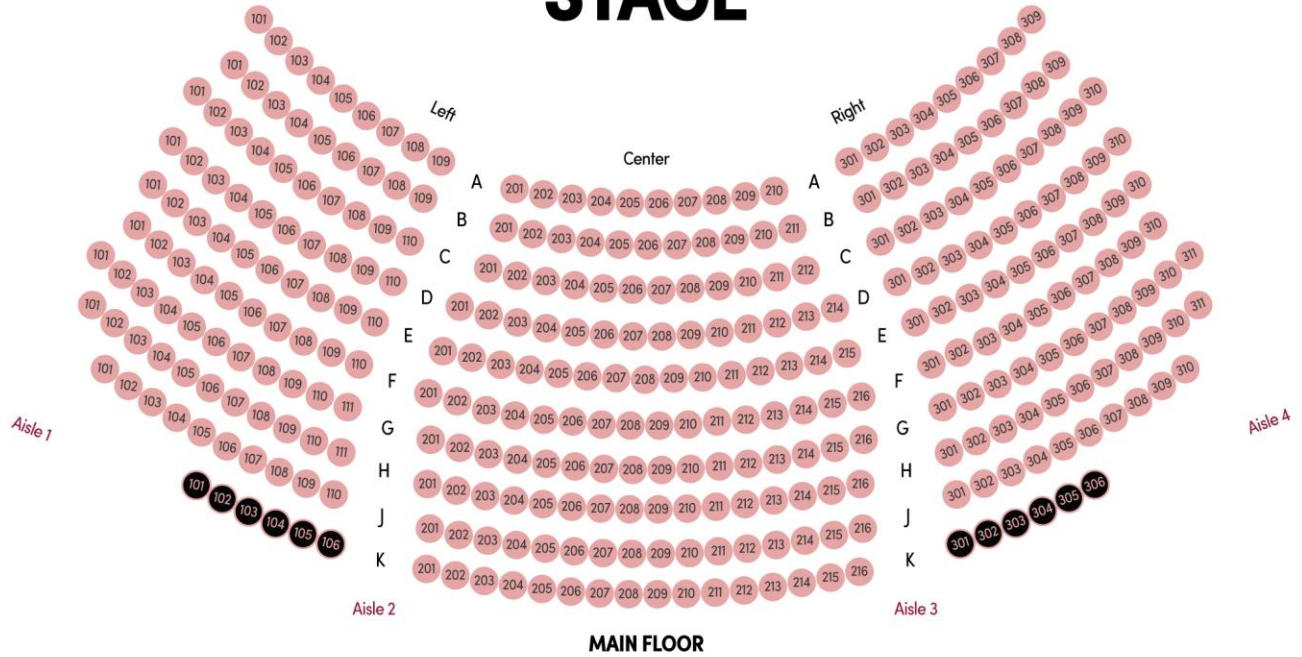
Theaters

Space	Capacity (Seated)
Downstairs Theater	515
Ensemble Theater	400
1700 Theater	80



The Steppenwolf Downstairs Theater is a state-of-the-art 515-seat proscenium theater. There are 334 seats on the main floor and 181 in the balcony and box levels.

STAGE

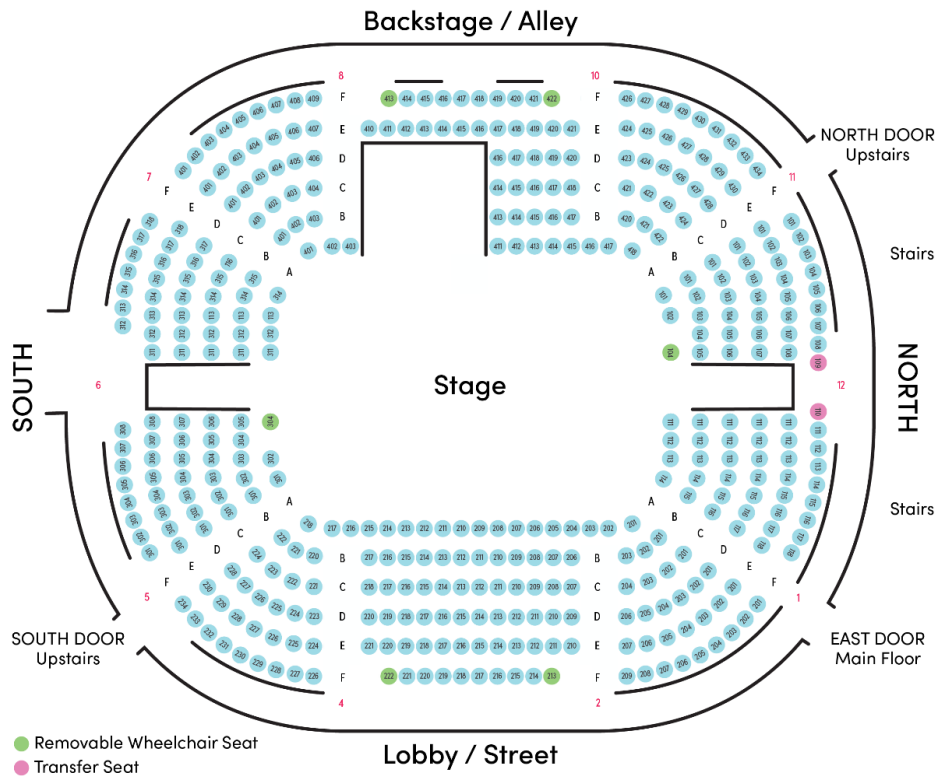


- Seat
- Wheelchair Accessible Seat

Downstairs Theater Seating Chart



The newest space is our intimate, 400-seat Ensemble Theater in Honor of Helen Zell. This theater is in-the-round, leaving no audience member more than 20 feet from the stage.





The 1700 Theater is a cabaret-style, flexible 80-seat space dedicated to showcasing the work of our ensemble and emerging local companies. The 1700 Theater is also home to LookOut, our performance series presenting a wide variety of genres and shows, from dance to live music to spoken word and beyond.

An Important Note about Renting our Theaters:

PRIVATE EVENT INQUIRY FOR A THEATER

Our theaters are great for lectures and presentations, company meetings and other special private events. If you wish to book the theater for a private event, please complete the [rental inquiry form](#) to receive more information and pricing.

PUBLIC EVENT INQUIRY FOR A THEATER

When there are breaks in the Steppenwolf performance schedule, we look to book the theaters with non-theatrical performances or festivals that bring crowds of 400 - 500 people per show. (Think comedy, concerts, or other forms of storytelling).

Please note: We do not accept rentals in the Downstairs Theater or Ensemble Theater for plays produced by outside companies.

If you have an opportunity for the Downstairs or Ensemble Theaters, please complete the [rental inquiry form](#) to receive more information and pricing.

If you are a Chicago-based artist interested in performing in the 1700 theater, reach out to the LookOut team at lookout@steppenwolf.org.

Lobbies and Bars

For up to (5) Hours

Space	Starting Regular Rate	Starting Non-Profit Rate (30% Off)	Capacity (Standing)
Downstairs Lobby	\$1,000	\$700	100
Balcony Bar	\$1,500	\$1,050	185
1646 Lobby (Tap Bar, Patio, Mezzanine and 2 nd floor)	\$1,500	\$1,050	175
Front Bar*	Monday Rate: \$1,500	Monday Rate: \$1,050	100

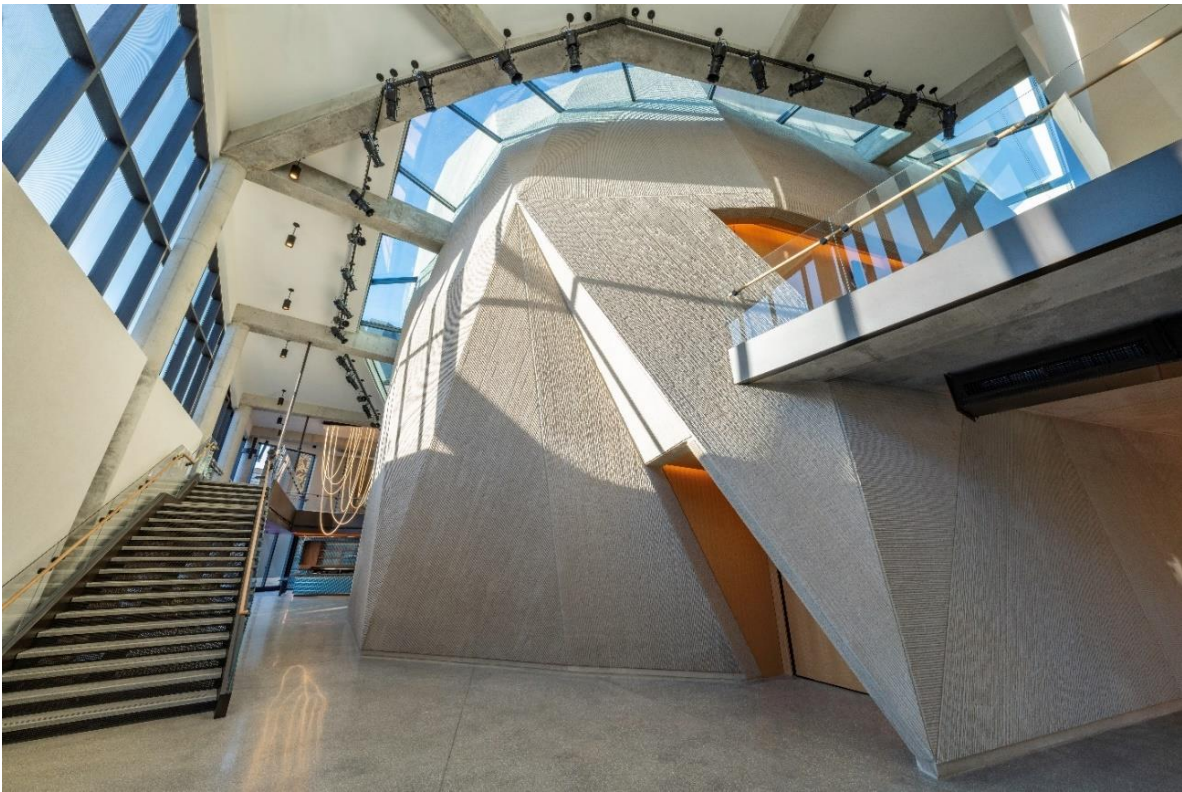
*Front Bar may be considered for a buy-out on any Dark Night (No Show), Tuesday-Sunday. Buyouts range from \$3,500-\$6,500, depending on the day.



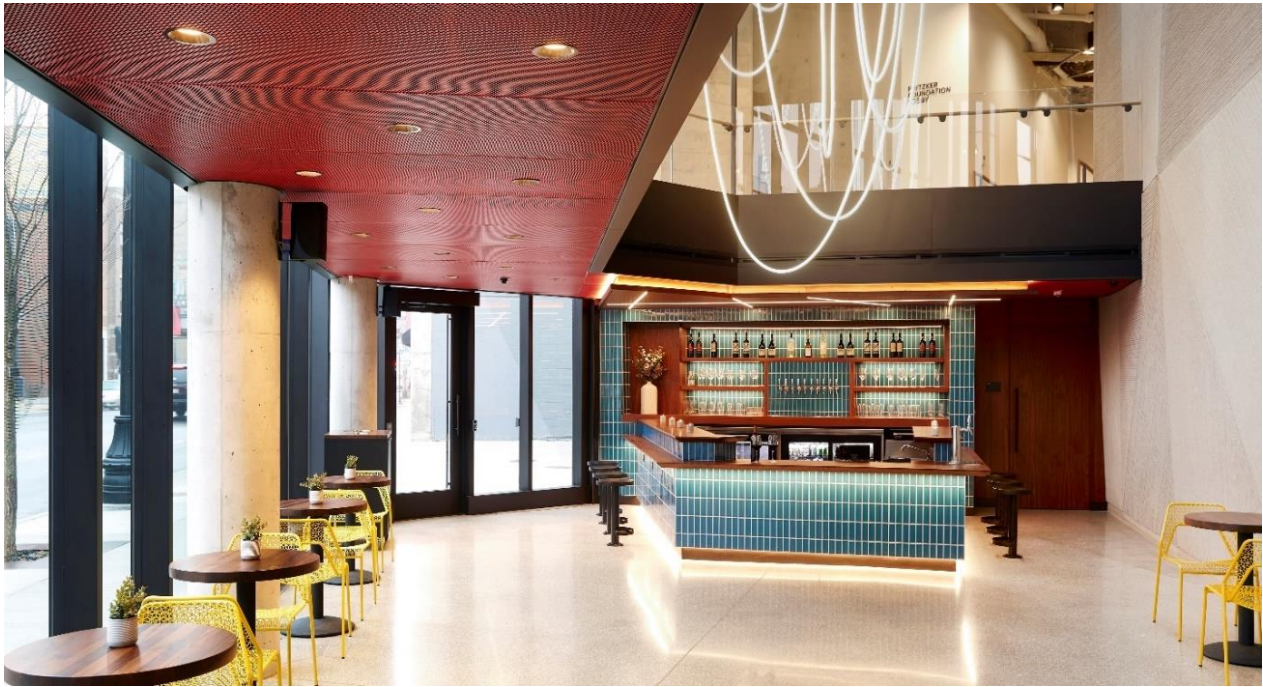
Lobby and Box Office, Downstairs Theater



Balcony Bar



1646 Lobby (First Floor)



Tap Bar (1646 Lobby)



Patio (Outside 1646 Lobby)



1646 Lobby (Second Floor)

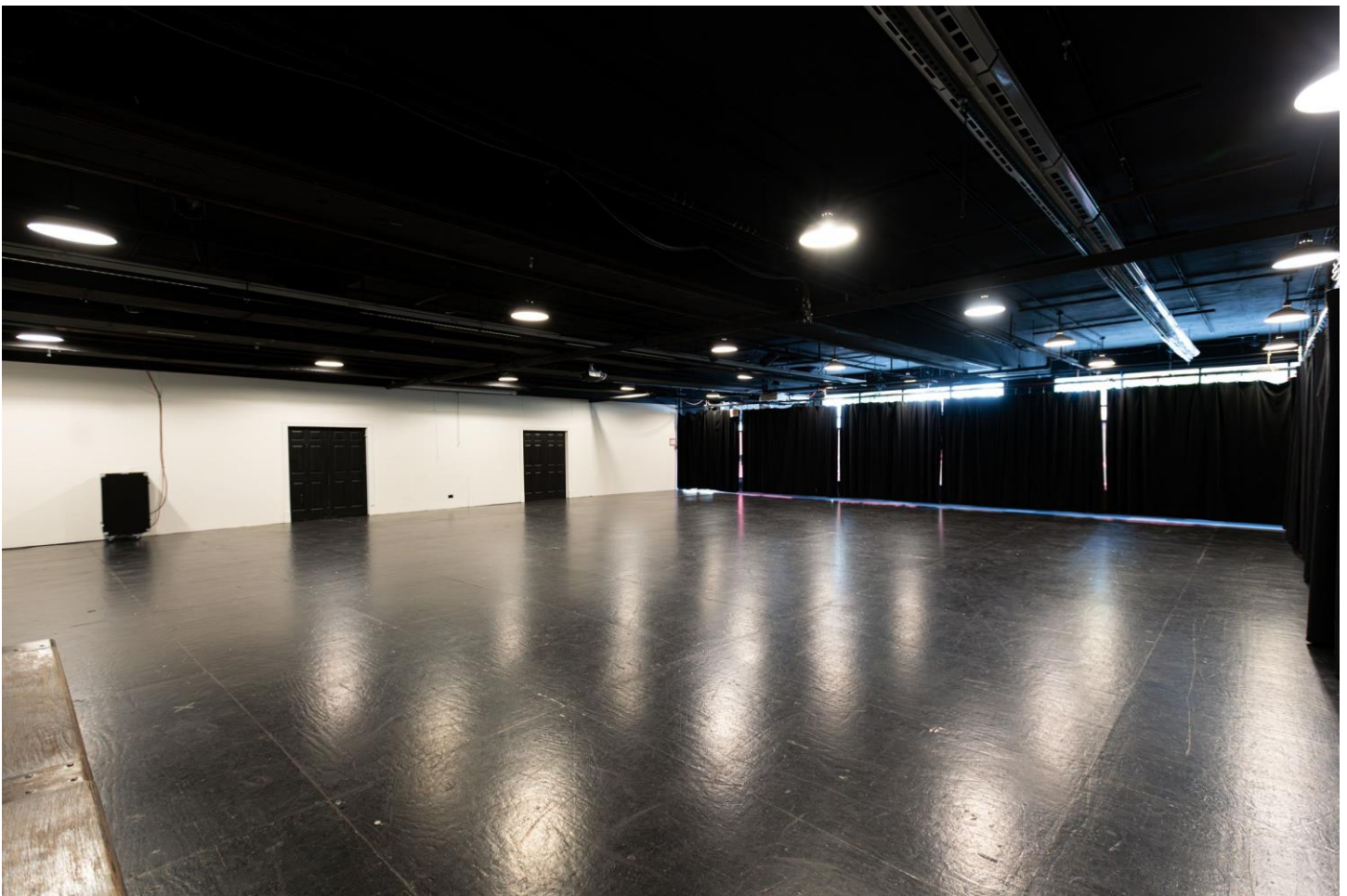


Front Bar

Meeting and Rehearsal Spaces

(2) Hour Minimum

Space	Regular Rate	Non-Profit Rate (30% off)	Capacity (Varies by set-up)
Merle Reskin	\$150/ hour	\$105/ hour	102
Rehearsal Hall A			158
Reflection Gallery			24-40
Rehearsal Hall B	\$75/hour	\$52.50/hour	77
The Lounge			12-23
Meet Up Space			24-40
Makers Studio			30-52
Learner Lab			10-20



Merle Reskin Rehearsal Hall



Rehearsal Hall A



Reflection Gallery



Rehearsal Hall B



The Lounge



Meet-Up Space



Makers Studio



Learner Lab

Rental Details

INCLUDED IN RENTAL PRICE

- Steppenwolf's supply of tables, chairs and linens.
- Set-up and tear-down of Steppenwolf furniture.
- Lobbies are complimentary with rental of corresponding theaters.

ADDITIONAL COSTS

- A \$50 technology fee will apply when using basic in-house technology (e.g. hybrid meeting equipment, screen, and projector).
- Additional fees may apply for more complex and theatrical technology needs (e.g. lights and sound system).
- Additional costs will apply when using Food & Beverage, Parking, Production staff, Front of House staff and Security personnel.
- Steppenwolf may ask Rental clients to pay for Facilities personnel if their event happens outside regular business hours, on a weekend, or on a holiday. Hours are subject to change and often dependent on show schedules. Hours are typically:

Mondays: 9am-6pm

Tuesday-Friday: 9am-10pm

Saturday: Noon-10pm

Sunday: 3pm-10pm

FOOD AND BEVERAGE

- Renting parties are responsible for arranging catering services and equipment. Steppenwolf will provide a list of preferred caterers. No outside liquor in the space is allowed. Steppenwolf will provide all bartending services.

Staffing

(All wages are subject to change)

Production Hourly Wages

2022/2023 Season

\$25 per hour for Stage Manager with a 5-hour minimum

\$22 per hour for other production staff with a 5-hour minimum

Typical Production staff needed to produce an event:

1 Stage Manager

1 Sound Board Operator

1 Light Board Operator

Stagehand(s)

Food and Beverage

\$25 per hour for a bartender with a 4-hour minimum

(One bartender is recommended per 75 guests)

Facilities

\$25 per hour, with a 4-hour minimum

Security

\$22 per hour, with a 4-hour minimum

Staffing Continued

Front of House

A fully staffed event in the Downstairs Theater includes:

- (1) House Manager
- (1) Concierge/Book Shop Attendant
- (1) Garage Assistant
- (1) Downstairs Assistant House Manager (Greeter)
- (1) Balcony House Manager
- (1) Balcony Assistant House Manager

A fully staffed event in the Ensemble Theater includes:

- (1) House Manager
- (1) Balcony House Manager
- (1) Balcony Assistant House Manager
- (1) Garage Assistant
- (1) Downstairs Assistant House Manager (Greeter)
- (1) 1646 Assistant House Manager (Greeter)
- (1) Concierge/Book Shop Attendant

Events in the 1700 Theater require less staff. Staff listed above is typical for Ensemble or Downstairs Theaters, but some shows and events will not need all personnel.

FOH Hourly Wages (Subject to Change)

Position	Rate	Extended*
Downstairs/Ensemble House Manager	\$20.00	\$60.00
1700 House Manager	\$18.00	\$54.00
Balcony House Manager	\$18.00	\$54.00
Downstairs Assistant House Manager (Greeter)	\$16.00	\$48.00
1646 Assistant House Manager (Greeter) (Added anytime 1646 doors are open for patrons)	\$16.00	\$48.00
Front Bar Assistant House Manager (Added when Red Door is open)	\$16.00	\$48.00
Balcony Assistant House Manager	\$16.00	\$48.00
Concierge/Book shop	\$16.00	\$48.00
Garage Attendants	\$16.00	\$48.00

*The extended rate reflects the 3-hour minimum. This minimum is applied if the event is not held in conjunction with a Steppenwolf performance. Also, it is very important to note that you may need 2 house managers depending on the number of people and the format of the specific event. The rates listed for many FOH positions are an average. Some of the more senior level personnel have a higher hourly rate. Do not assume your budget total until it has been verified.

OUR MISSION

Steppenwolf Theatre Company strives to create thrilling, courageous and provocative art in a thoughtful and inclusive environment.

We succeed when we disrupt your routine with experiences that spark curiosity, empathy and joy.

We invite you to join our ensemble as we navigate, together, our complex world.

CONTACT

Steppenwolf

Morgan Eklund

Rental and Events Manager

(c) 606-776-9813 (o) 312-654-5620

meklund@steppenwolf.org

